

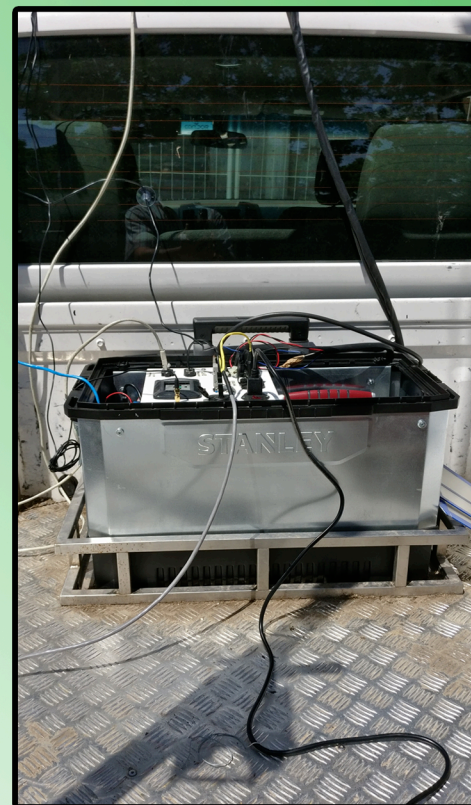


TALED

TelecommunicAtion, Localization and real time Environment Detection



TALED



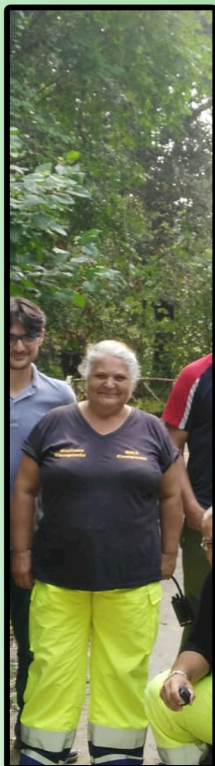
Integration and testing

TALED



Integration and testing

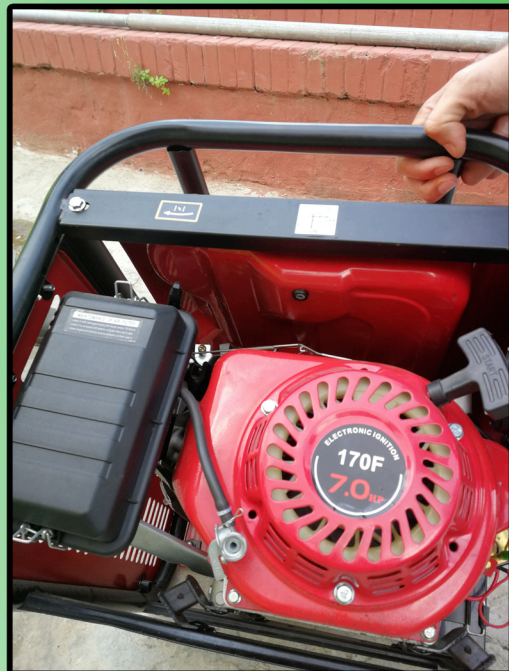
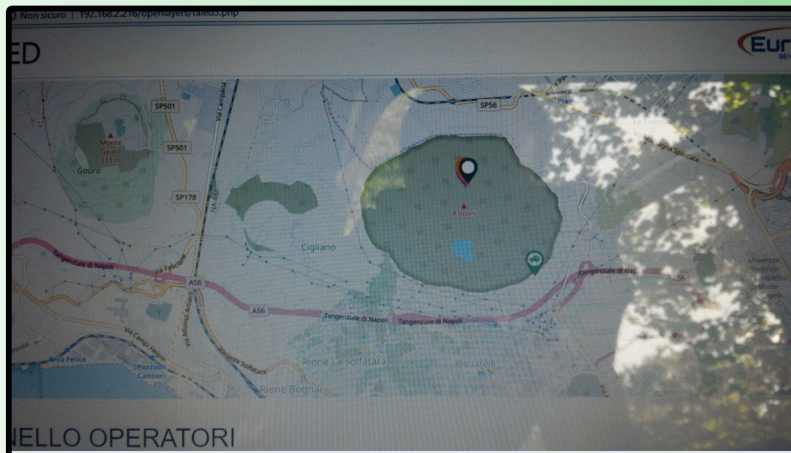
TALED



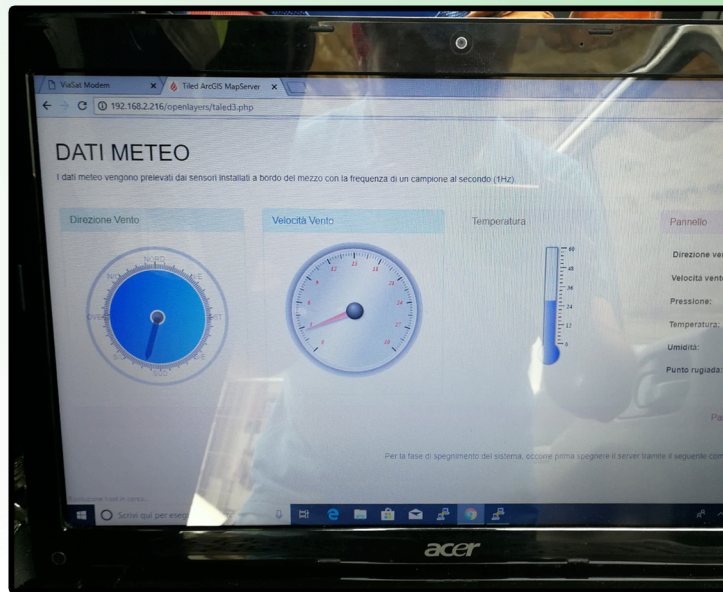
```

lq 6100 11:30:00.0.215.223.38)
0 x 2.111.49.11.0.215.223.38)
le x taled_process > 2018-7-5 16:51:00 - info: --> TROVATE 1 RECORD DA INVIARE A RabbitQT
sl x taled_process > 2018-7-5 16:51:00 - info: --> Invio a Rabbit OK
0 x gps > 2018-7-5 16:51:01 - info: Thu Jul 05 2018 16:51:01 GMT+0200 (CEST) 40.840408333333336 14.157965
x gps > 2018-7-5 16:51:01 - info: Thu Jul 05 2018 16:51:01 GMT+0200 (CEST) 40.840408333333336 14.157965
x gps > 2018-7-5 16:51:01 - info: Thu Jul 05 2018 16:51:01 GMT+0200 (CEST) 40.840408333333336 14.157965
x gps > 2018-7-5 16:51:01 - info: Thu Jul 05 2018 16:51:01 GMT+0200 (CEST) 40.840408333333336 14.157965
x taled_process > 2018-7-5 16:51:01 - info: INSERT INTO tracker (mac_address, payload, fix_type, prefix,
x report_type, battery, latitude, longitude, time) VALUES ("00-0d-b5-31-17-71-35-40", "0.130.95.111.45.11.0.215.223.38",
x 225.40", "130", "2", "95", "40.841483,14.147879999999999", "2018-07-05 14:51:11")
x taled_process > 2018-7-5 16:51:01 - info: INSERT TRACKER in DB: mac(00-0d-b5-31-17-71-35-40) - payload(0.130.95.111.45.11.0.215.223.38)
x 2.111.49.11.0.215.225.40)
x taled_process > 2018-7-5 16:51:01 - info: --> TROVATE 1 RECORD DA INVIARE A RabbitQT
x taled_process > 2018-7-5 16:51:01 - info: --> Invio a Rabbit OK
x gps > 2018-7-5 16:51:01 - info: Thu Jul 05 2018 16:51:01 GMT+0200 (CEST) 40.840408333333336 14.157965
x gps > 2018-7-5 16:51:01 - info: INSERT Tracker USB in DB: mac(540242896) Latitude: 40.840408333333336
x Longitude: 14.157965
x gps > 2018-7-5 16:51:01 - info: --> TROVATE 1 RECORD DA INVIARE A RabbitQT
x gps > 2018-7-5 16:51:01 - info: --> Invio a Rabbit OK
x gps > 2018-7-5 16:51:02 - info: Thu Jul 05 2018 16:51:02 GMT+0200 (CEST) 40.840408333333336 14.157965
x gps > 2018-7-5 16:51:02 - info: Thu Jul 05 2018 16:51:02 GMT+0200 (CEST) 40.840408333333336 14.157965
x gps > 2018-7-5 16:51:02 - info: Thu Jul 05 2018 16:51:02 GMT+0200 (CEST) 40.840408333333336 14.157965
x gps > 2018-7-5 16:51:02 - info: Thu Jul 05 2018 16:51:02 GMT+0200 (CEST) 40.840408333333336 14.157965
x gps > 2018-7-5 16:51:03 - info: Thu Jul 05 2018 16:51:03 GMT+0200 (CEST) 40.840408333333336 14.157965
x gps > 2018-7-5 16:51:03 - info: Thu Jul 05 2018 16:51:03 GMT+0200 (CEST) 40.840408333333336 14.157965
x gps > 2018-7-5 16:51:03 - info: Thu Jul 05 2018 16:51:03 GMT+0200 (CEST) 40.840408333333336 14.157965
x gps > 2018-7-5 16:51:04 - info: Thu Jul 05 2018 16:51:04 GMT+0200 (CEST) 40.840408333333336 14.157965
x gps > 2018-7-5 16:51:04 - info: Thu Jul 05 2018 16:51:04 GMT+0200 (CEST) 40.840408333333336 14.157965
#####
qqkq Metadata
).Sms xx App Name          drivergill
0  xx Restarts            0
9  xx Uptime              47m
xx Script path            /root/drivergill.js
xx Script args            N/A
xx Interpreter            node
xx Interpreter args       N/A
xx Exec mode              Fork
xx Node.js version        8.9.4
#####
es: scroll | Ctrl-C: exit
To go further check out https://keymetrics.io/
  
```


TALED



TALED



TALED



Demonstration

TALED



Demonstration

TALED



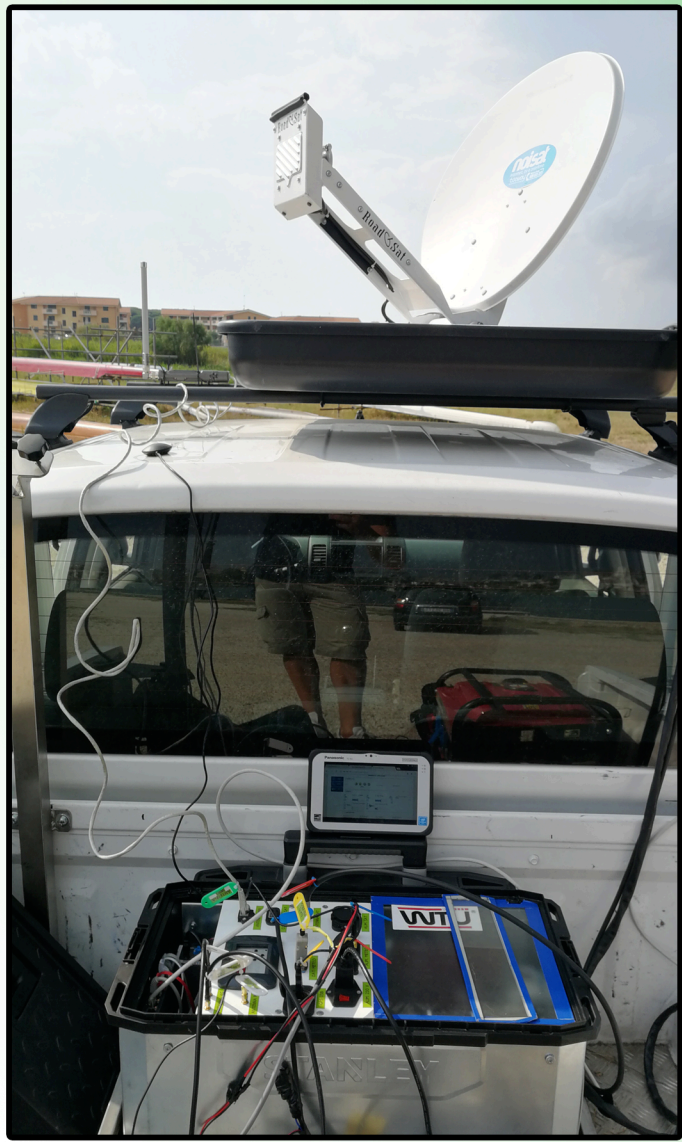
TALED



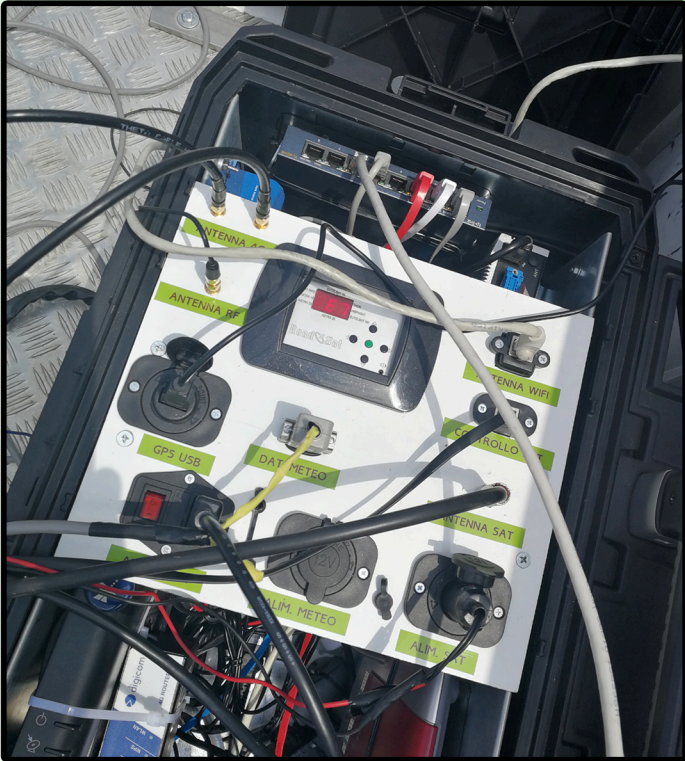
TALED



TALED



TALED



Demonstration

TALED



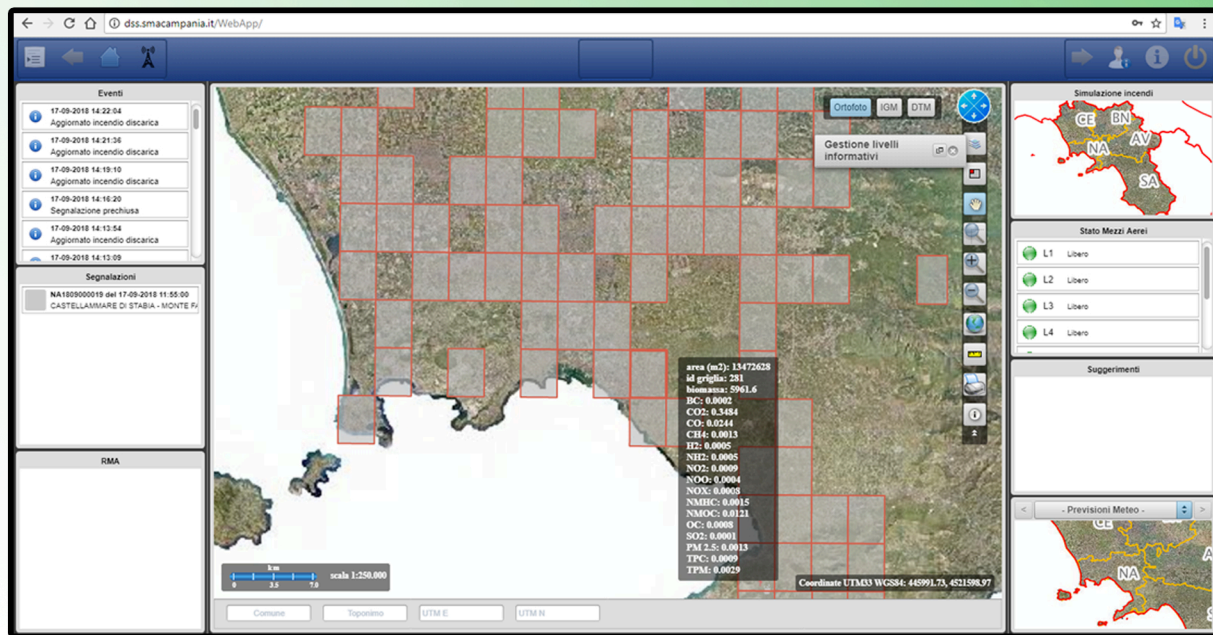
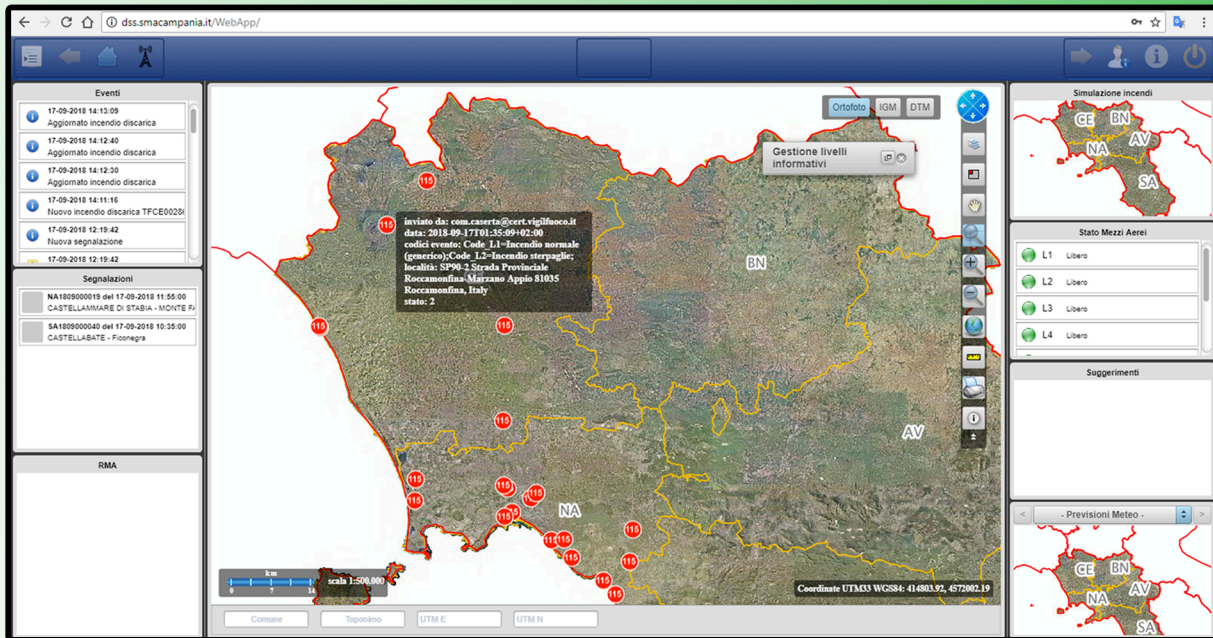
Demonstration

TALED

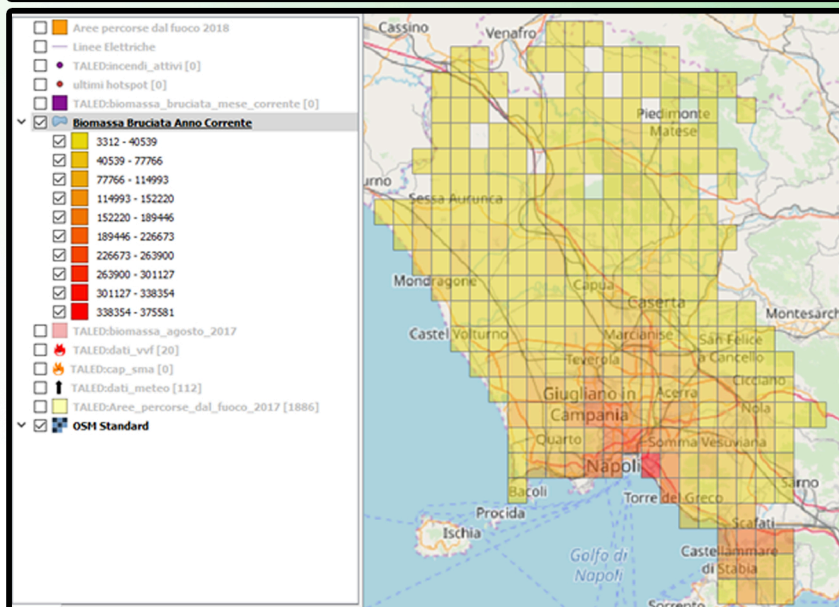
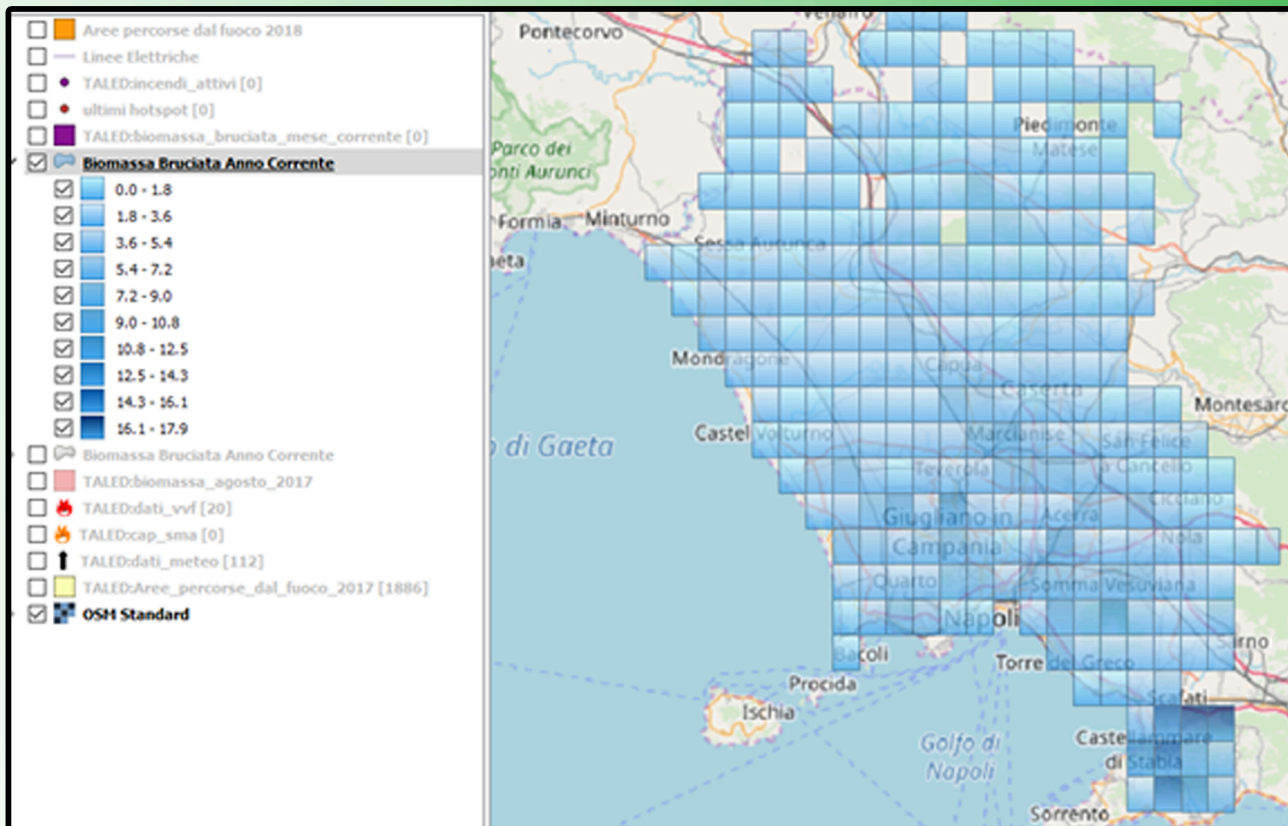


Demonstration

TALED



TALED





TALED

dss.smacampania.it/WebApp/

Eventi

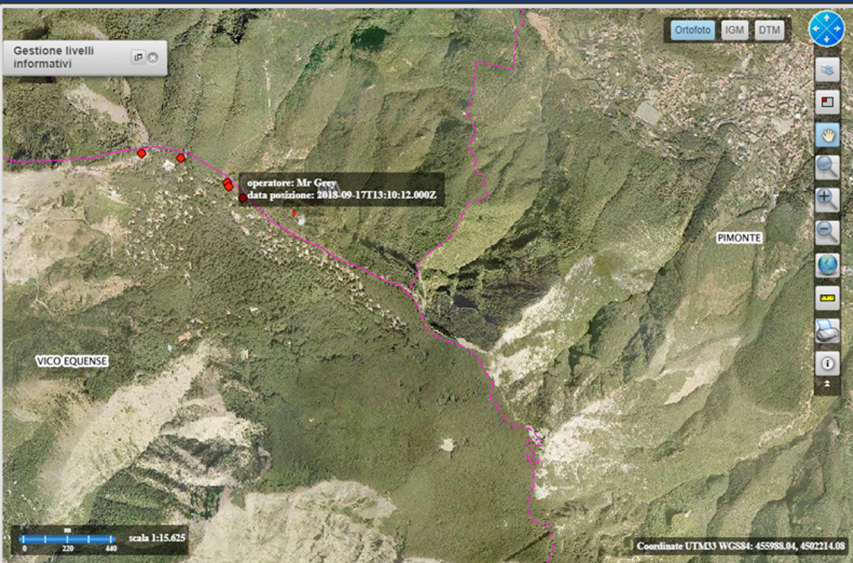
- 17-09-2018 14:32:06 Segnalazione prechiusa
- 17-09-2018 14:26:13 Coordinate segnalazione modificate
- 17-09-2018 14:22:47 Calcolo priorità per BN1009000011
- 17-09-2018 14:22:39 Nuova segnalazione
- 17-09-2018 14:22:04 Aggiornato incendio discarica
- 17-09-2018 14:21:36

Segnalazioni

NA1009000019 del 17-09-2018 11:35:00 CASTELLANARE DI STABIA - MONTE F.

RMA

Gestione livelli informativi




Ortofoto IGM DTM

Coordinate UTM33 WGS84: 455988.04, 492214.08

Comune Toponimo UTM E UTM N

Simulazione incendi




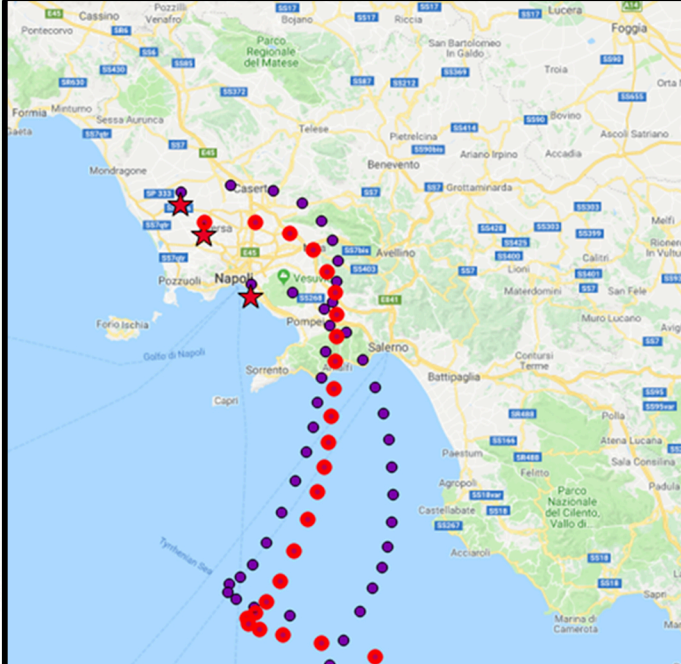
Stato Mezzi Aerei

- L1 Libero
- L2 Libero
- L3 Libero
- L4 Libero

Suggerimenti

Previsioni Meteo





TALED:hotspot_trace_ultimo_giorno

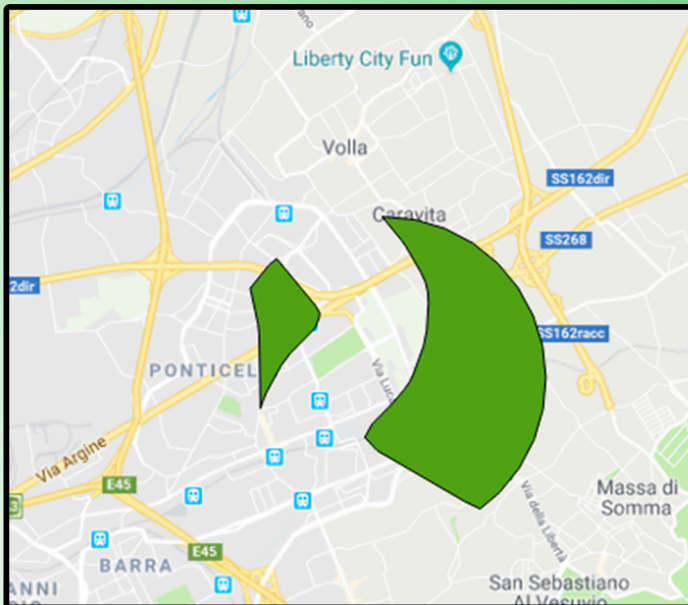
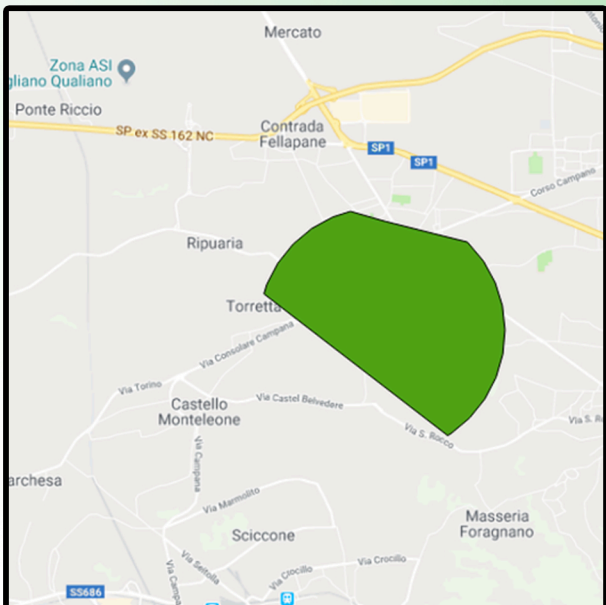
- id_griglia 217
 - (Derivato)
 - (Azioni)
 - data_lettura 2018-09-10T15:20:00
 - id_griglia 217

Modalità Layer in uso Apri modulo automat

Vista Albero



TALED



TALED



ITIM 15:05

192.168.2.216/openlayers/t

TALED Euro.Soft
BEYOND INNOVATION

PANNELLO OPERATORI

Titolo	Dipartimento dei Vigili del Fuoco - COMANDO PROVINCIALE NAPOLI
> (Derivato)	
> (Azioni)	
identifier	2.49.0.0.380.2.15.63.20180828.1.18743.0
sender	com.napoli@cert.vigilfuoco.it
sent	2018-08-28T16:05:39+02:00
status	Actual
msgtype	Update
source	***RIMOSSO***
scope	Private
addresses	taled_sma@eurosoft.it , com.napoli@cert.vigilfuoco.it
code	CAP-IT-VF:0.1
reference	com.napoli@cert.vigilfuoco.it ;2.49.0.0.380.2.15.63.20180828.0.44.0,2018-08-28T15:53:10+02:00
incidents	com.napoli@cert.vigilfuoco.it ;2.49.0.0.380.2.15.63.20180828.0.44.0,2018-08-28T15:53:10+02:00
language	it-IT
category	Fire
event	Incendio normale (generico)
responsetype	None
urgency	Unknown
severity	Unknown
certainty	Unknown
audience	Messaggio destinato alla gestione del soccorso la cui pubblicazione non è autorizzata.
eventcodes	Code_L1=Incendio normale (generico);Code_L2=STERPAGLIE;
effective	2018-08-28T16:05:39+02:00
expires	2018-08-28T16:05:39+02:00
sendername	Dipartimento dei Vigili del Fuoco - COMANDO PROVINCIALE NAPOLI
headline	Incendio normale (generico)
description	***RIMOSSO***
instruction	***RIMOSSO***
web	https://maps.google.it/maps?f=q&source=s_q&q=%254040.94104900,14.01953750&maphl=i&teampt=he
parameters	***RIMOSSO***
areadesc	CODECALL=44;TIMECALL=2018-08-28T15:53:00+02:00;CODEINT=18743;TIMEINT=2018-08-28T16:05:00+02:00
geocodes	Via Circumvallazione Lago Patria 80014 Giugliano in Campania, Italy
alt&url	ZIP=80014;